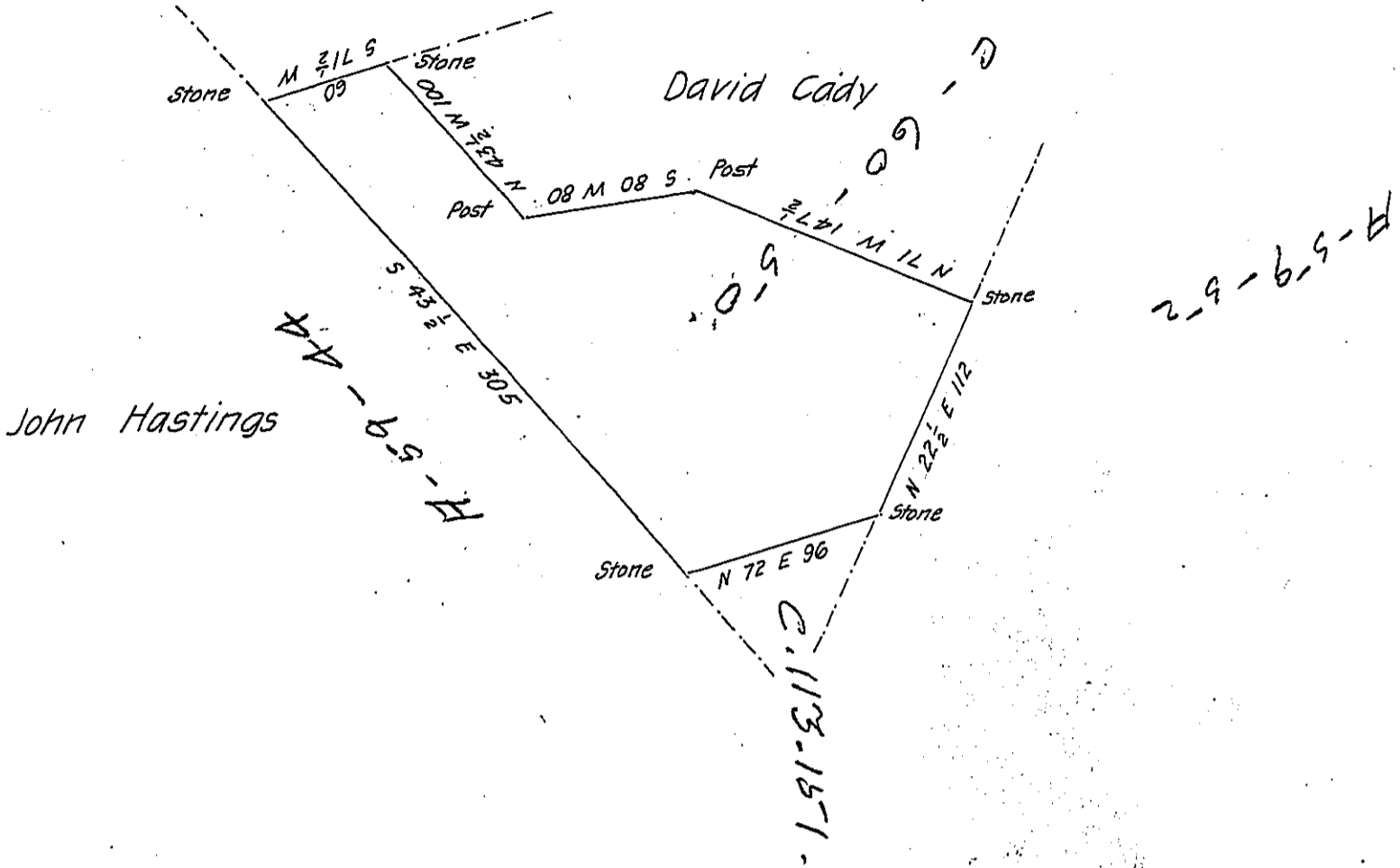


E. Kimble

(Reverse)



By Virtue of a Warrant dated the 6th of April 1850 Surveyed
 the 2^d of May 1850 to Samuel Quick the above described Tract of Land
 Situate in Palmyra Township Pike County adjoining lands of Ephraim
 Kimble (being unimproved) Containing Two hundred and five acres and
 forty perches and the allowance of Six p^r C^t for Roads &c^a

p^r

John T. Cross D. S.

To John Laporte Esq.

Surveyor General of Pa.

IN TESTIMONY that the above is a copy of the original remaining on file in
 the Department of Internal Affairs of Pennsylvania, made
 conformably to an Act of Assembly approved the 16th day of
 February, 1833, I have hereunto set my Hand and caused
 the Seal of said Department to be affixed at Harrisburg,
 this twenty sixth day of May 1906

Loach
 Secretary of Internal Affairs.